

# USB3.0 Data Guardian Recovery Tool User Manual



**June. 17, 2014**

**Ver.1.6**

# Introduction

A. Notice

B. Open the File

C. Use the Recovery Tool

D. Use the AP Tool

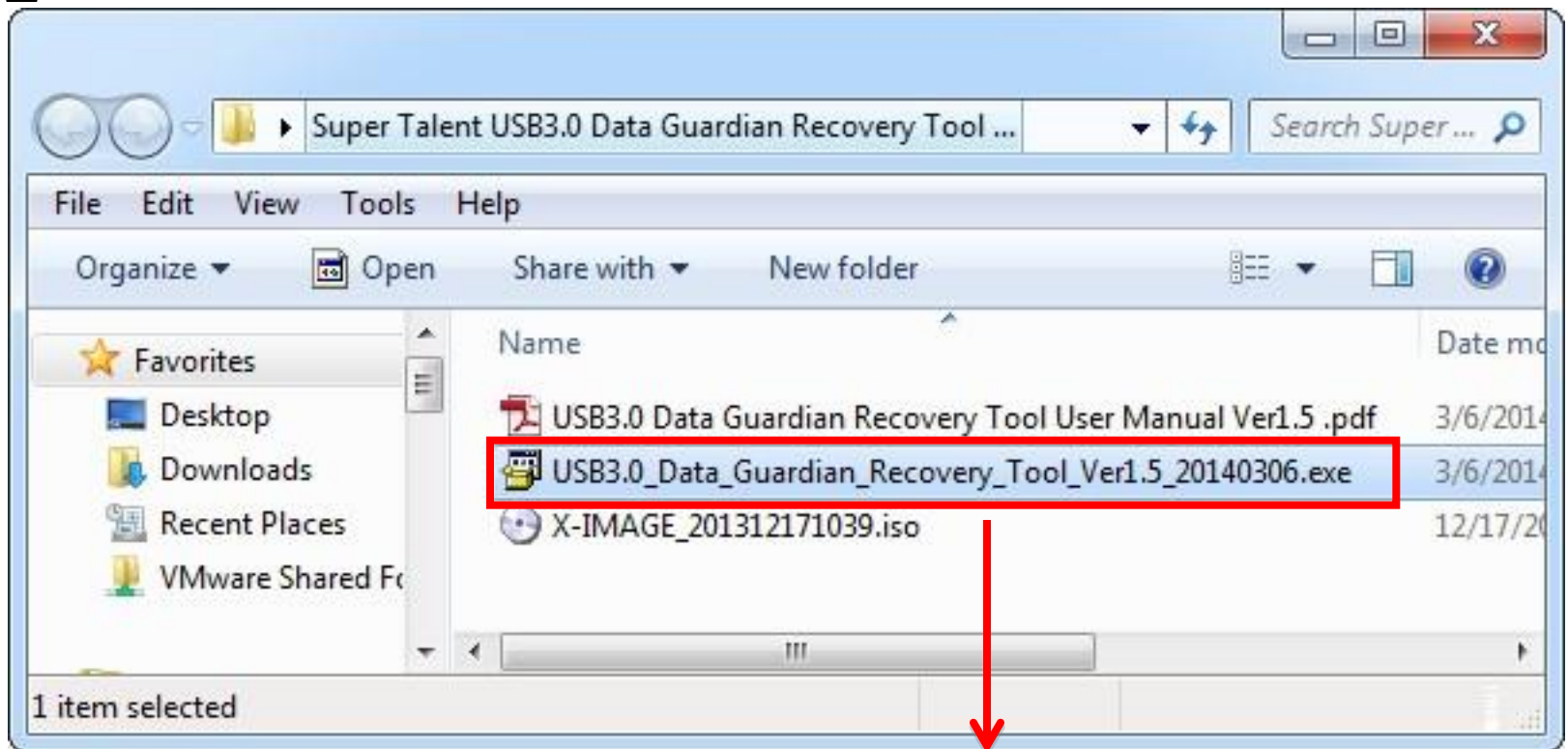
E. Initial Process

# A. Notice

1. The Recovery Tool is only used when USB3.0 Data Guardian is **malfunction** or when **password is forgotten**.
2. Please **do not** use this tool when USB3.0 Data Guardian is functionally well.
3. All Data would be **ERASED!** Please Noted.

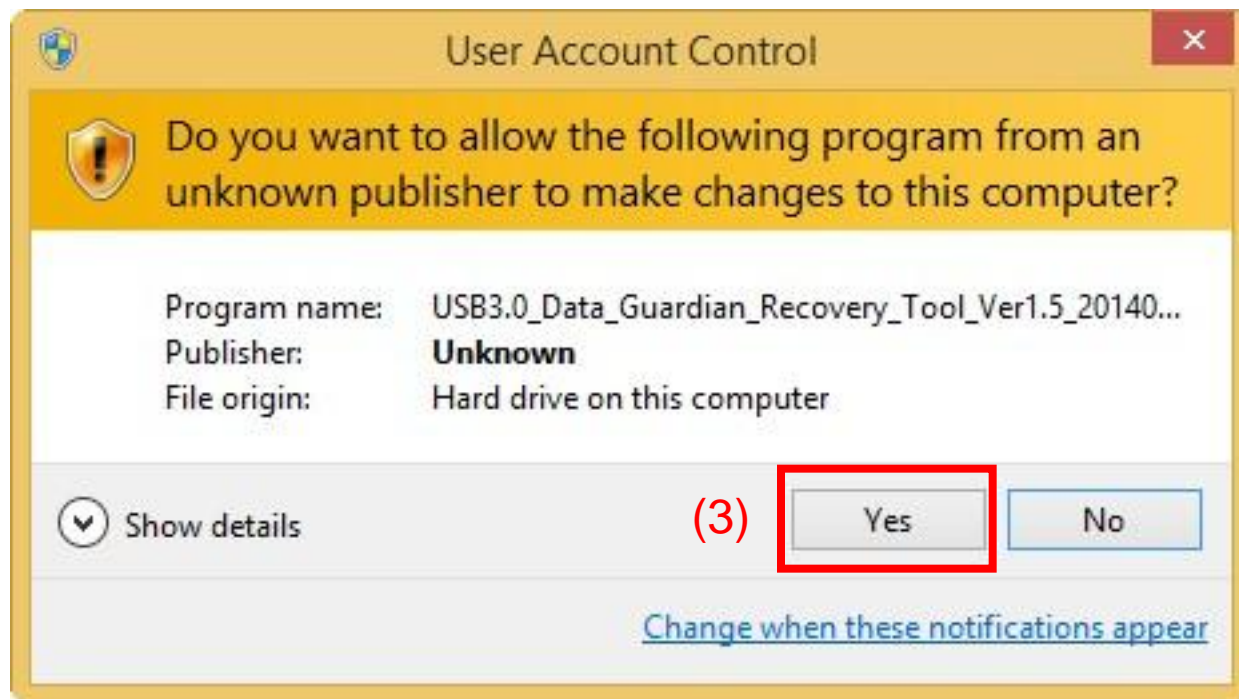
# B. Open the file

- (1). Go to download folder.
- (2). Open file, Data\_Guardian\_Recovery\_Tool\_Ver1.5\_20130306.exe

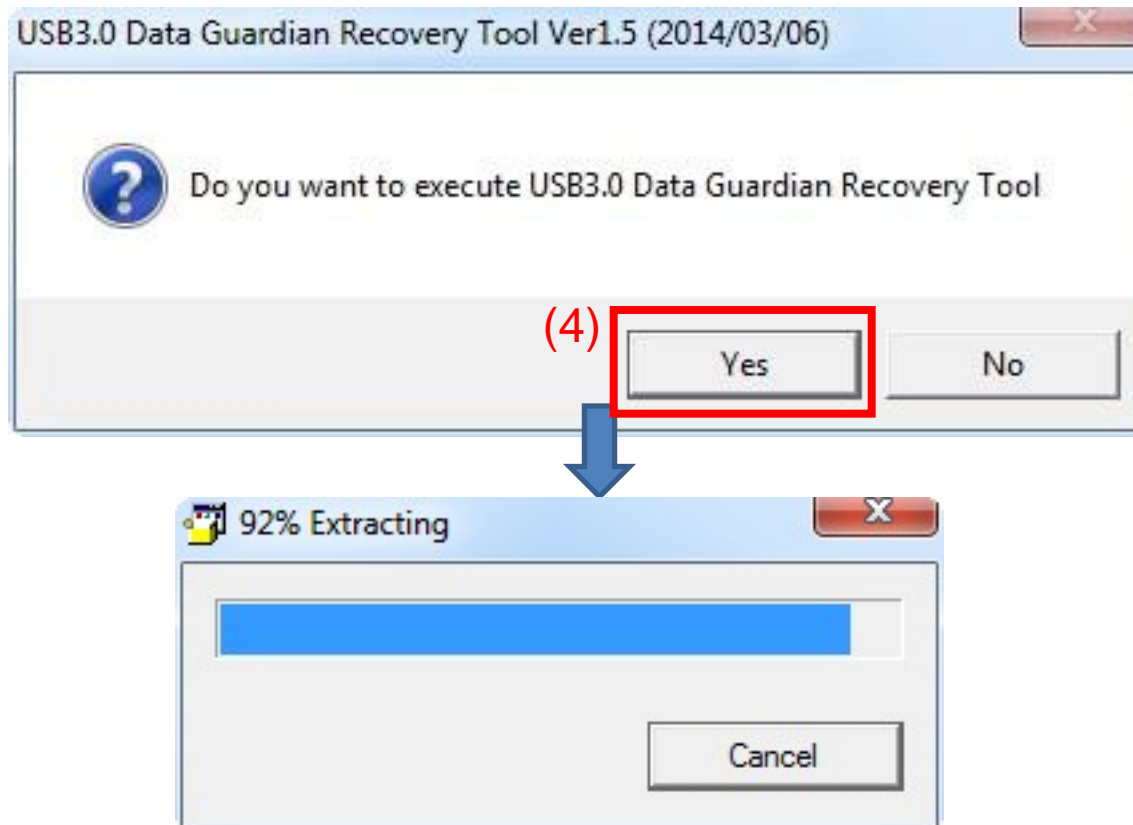


(2) Open this file.

- In Windows 7 / Vista / 8 / 8.1 , you would allow UAC to execute this application.
- (3). UAC protect, please click [Yes].



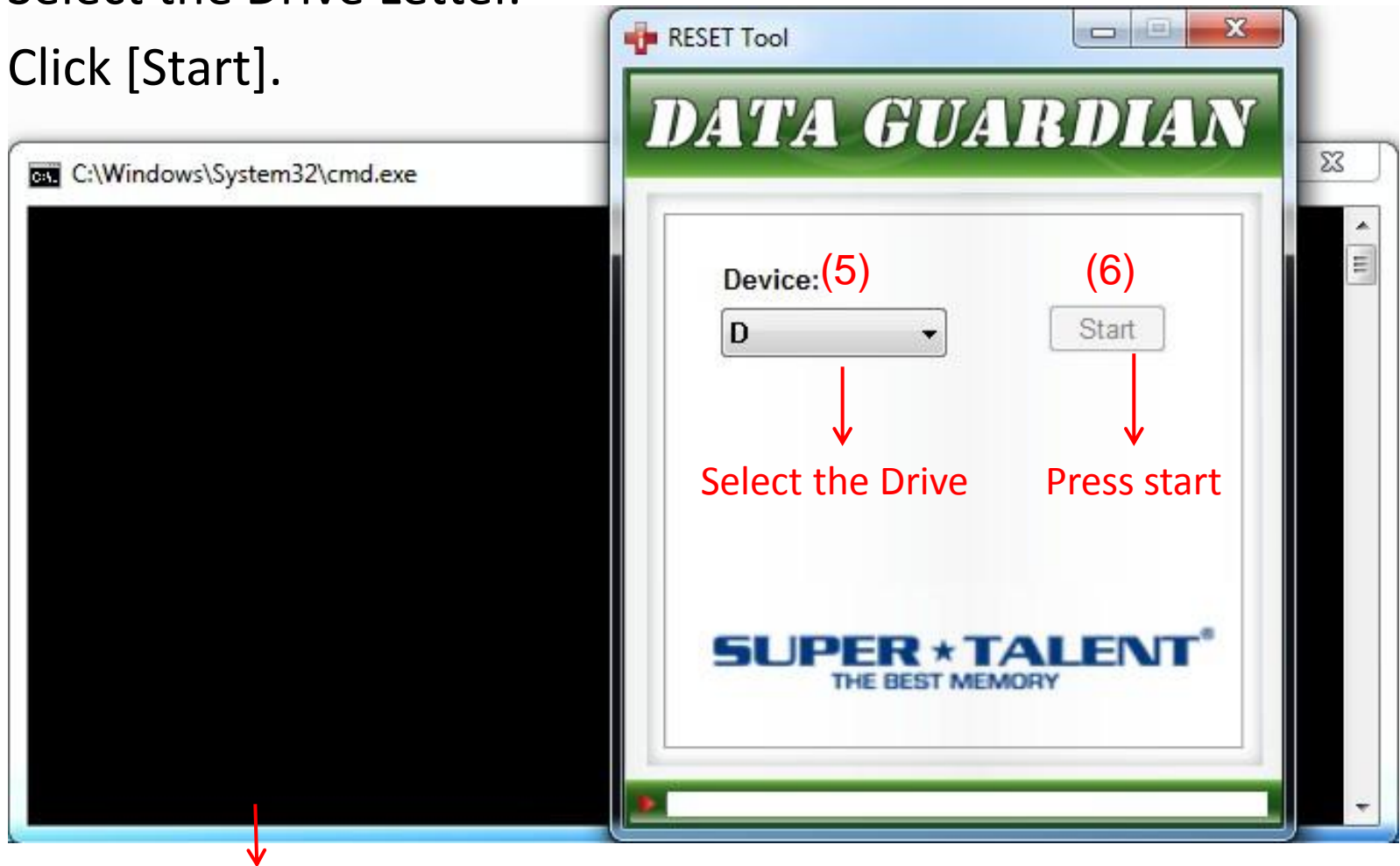
- Please **insert** your USB3.0 Data Guardian **FIRST!**
- **(4)**. Click [Yes] to execute Recovery Tool.



# C. Run the Recovery Tool

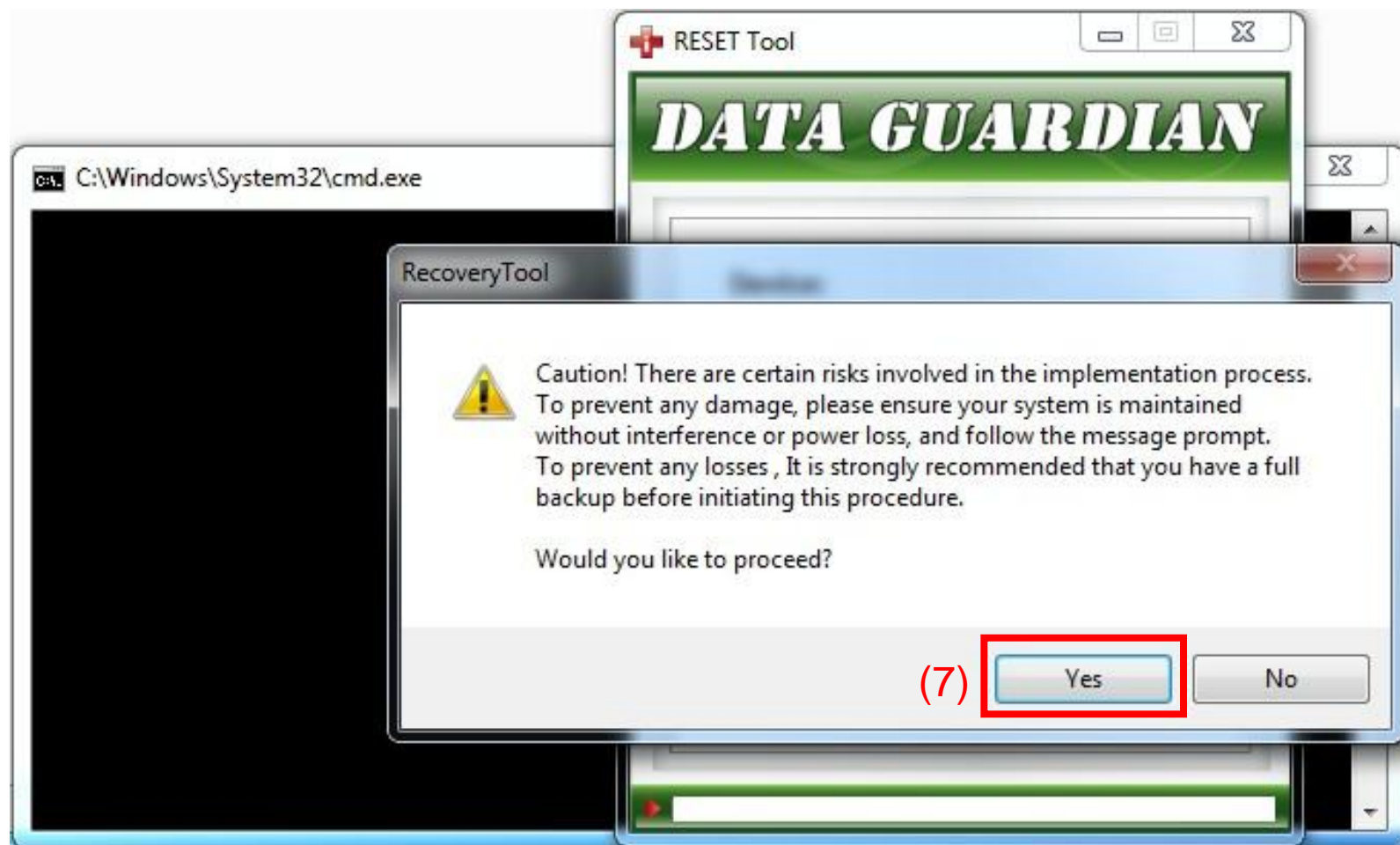
(5). Select the Drive Letter.

(6). Click [Start].



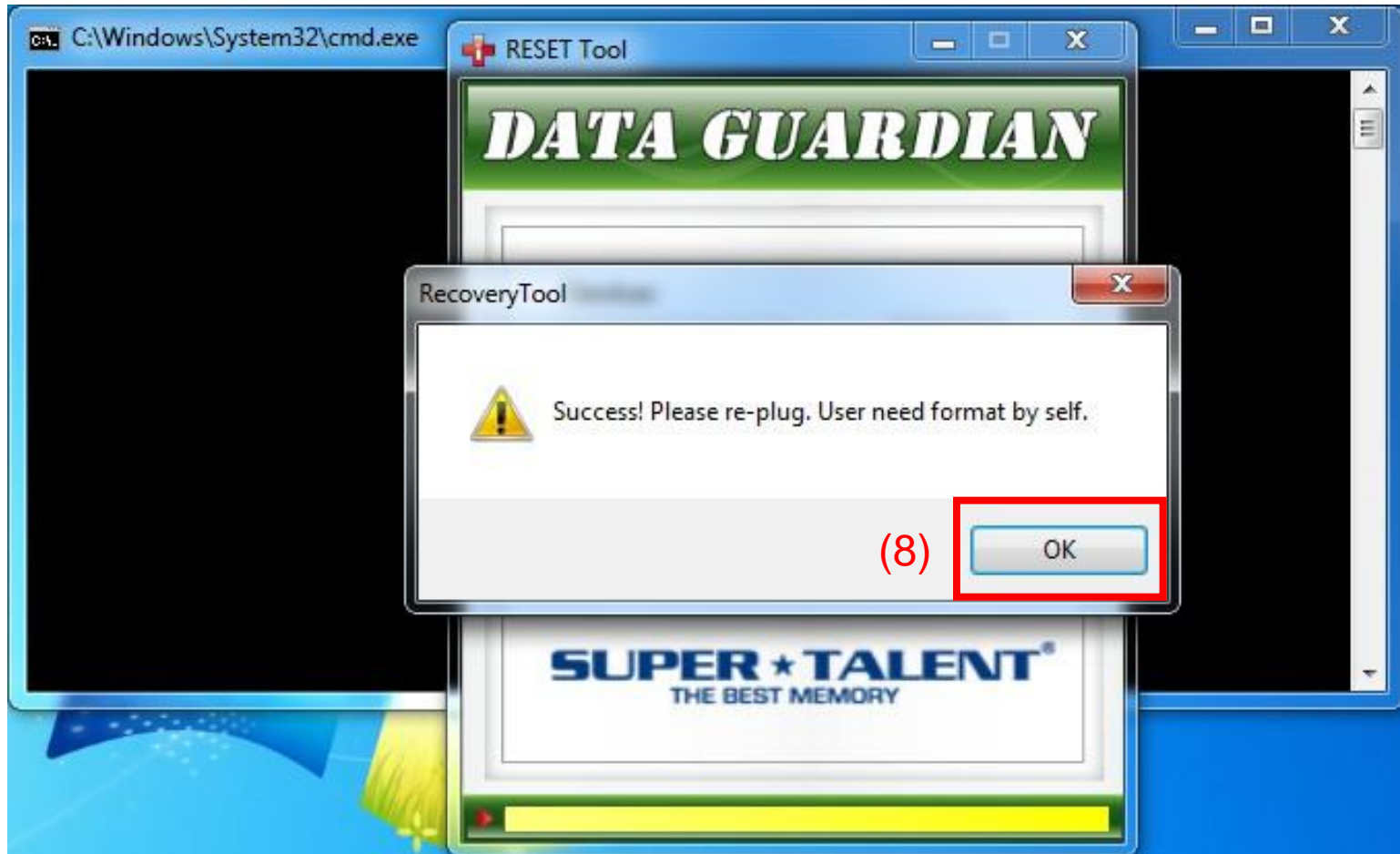
Please do not close the black one. It will close by itself.

- Please read carefully, the drive data would be erased.
- (7). Click [Yes] and continue.

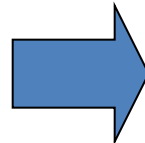




- (8). If Success, then click [OK] and go to next step.  
If fail or else situation, please check page 15 FAQ.



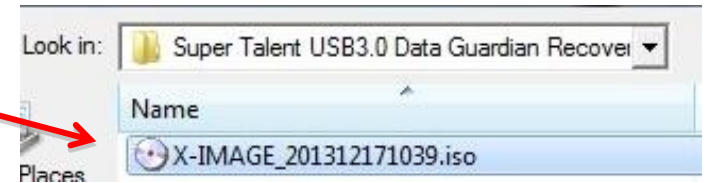
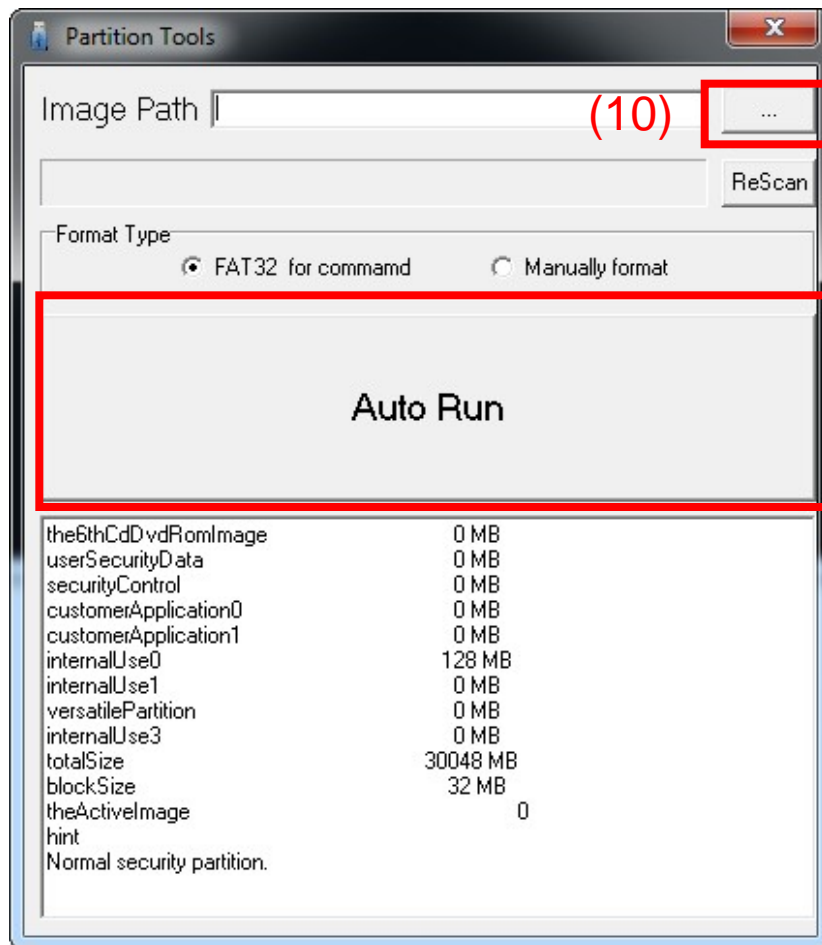
- Please re-insert USB drive. The Screen would be like below.  
(9). Wait the [RESET Tool] can detect USB drive, and click [X] to close application.



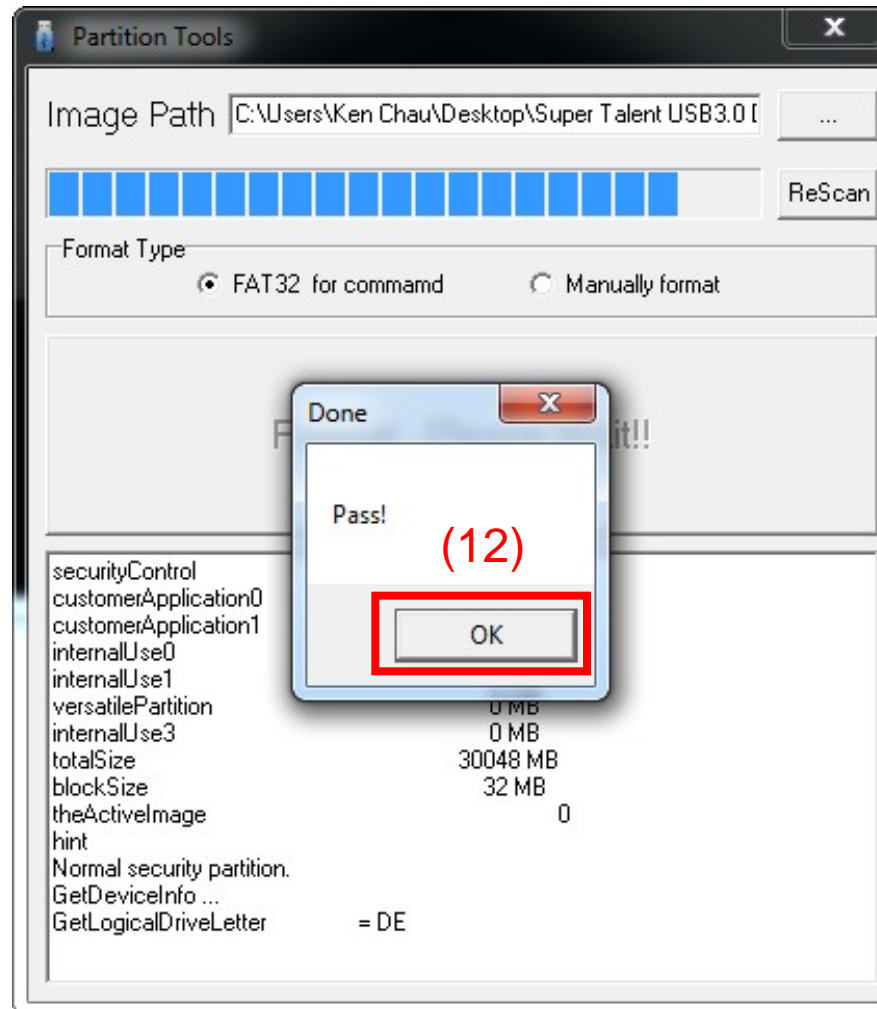
# D. Run the AP Tool

(10). Select [X-IMAGE\_201312171039.iso].

(11). Just Click [Auto Run] and go next step.

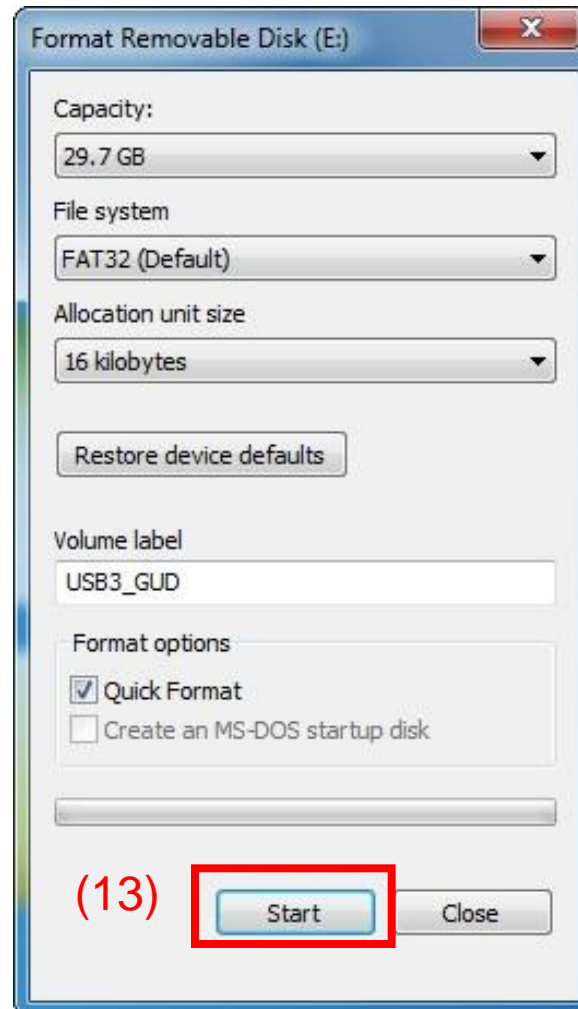


(12). If Pass, then click [OK] and go to next step.  
If fail, then go to page 15 FAQ.



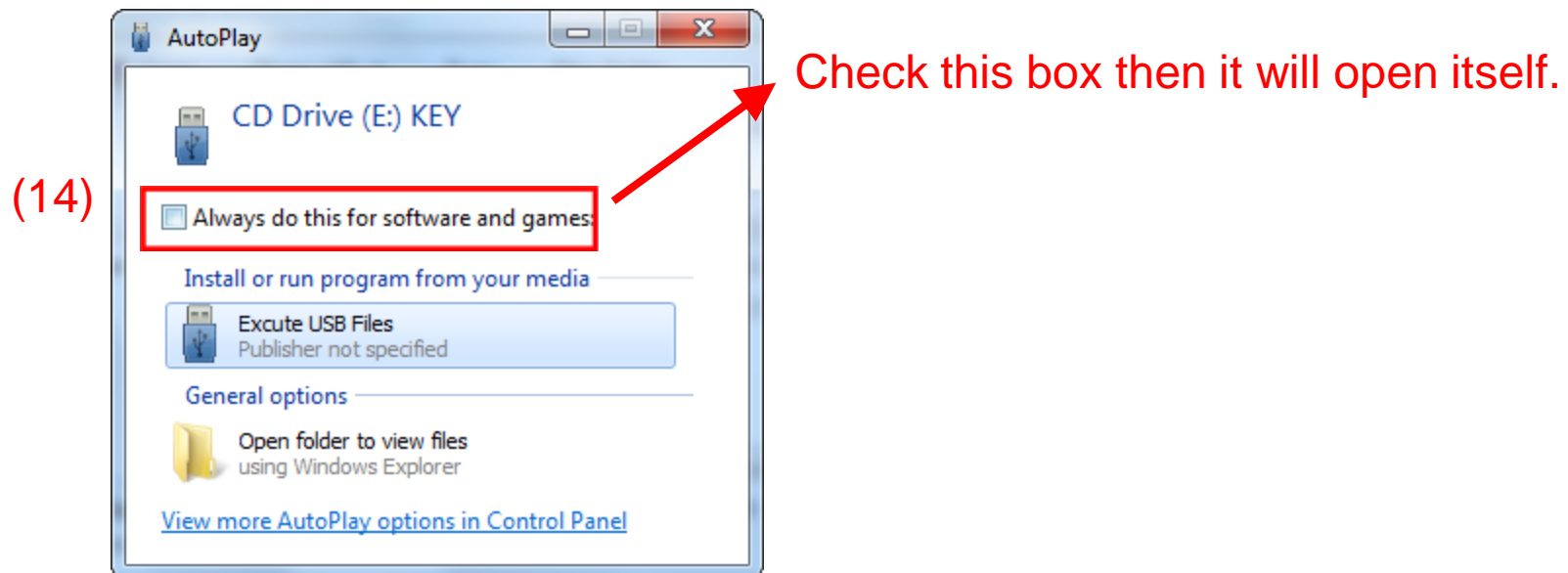
Please re-insert USB drive.

(13). Click [Start] to format disk.



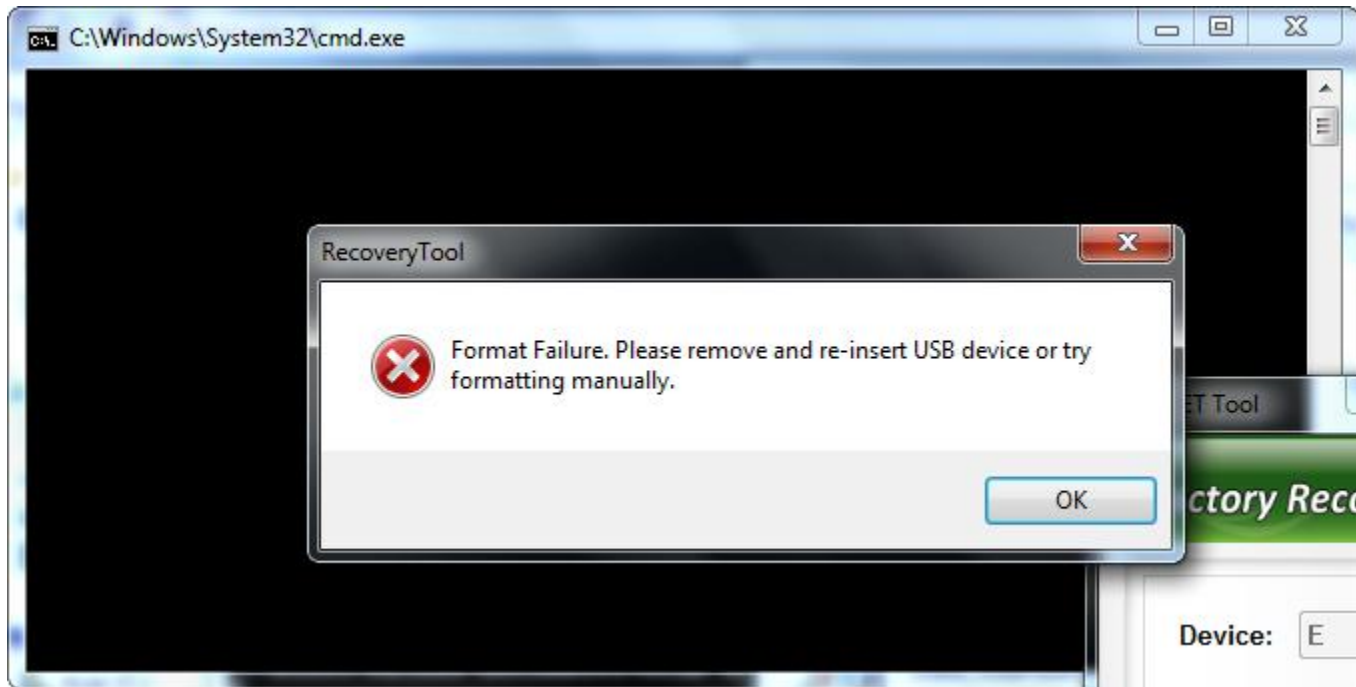
# E. Initial Process

- Please re-insert USB drive. The Screen would maybe like below or next step.
- (14). You can switch the AUTOPLAY function on / off.
- Execute USB File, the application would be get first time initial process.



# FAQ

- If failure, please **reboot** your computer and try standard step again.
- If any question about this manual, please contact [support@supertalent.com](mailto:support@supertalent.com)



**SUPER ★ TALENT®**  
THE BEST MEMORY