

Technical Support:

For immediate personalized WTG Enterprise Support please contact us!

Super Talent has been working closely with Microsoft to groom our USB 3.0 certified drives explicitly to the needs of Windows To Go, and is dedicated to making sure it meets the needs of Microsoft & Windows 8.

If there is not a question our Enterprise rep can immediately answer for you, we promise to find an Engineer who can with a timely response! For any and all technical support questions or comments please contact us (at)WTG.support@supertalent.com .

Warranty Information:

For full details on STT's latest product warranty information please visit :
http://www.supertalent.com/support/SUPER_TALENT_LIMITED_WARRANTY.pdf

For full details on STT's latest RMA information please visit:
<http://www.supertalent.com/support/rma.php>

**Note: Special OEM RMA and Warranty terms available upon request and STT approval.

Super Talent Location Include:

- San Jose
- Los Angeles
- Chicago
- New Jersey
- Georgia
- Miami
- Brazil
- Europe
- Shenzhen
- Wuhan
- Taiwan
- Hong Kong
- Japan
- Mexico

- ⊛ Headquarters
- Sales Representative
- ⊙ Sales, Warehouse
- ◆ Sales, Purchasing
- Factory



Corporate Headquarters

United States

2077 North Capitol Avenue
San Jose, CA 95132 U.S.A
Tel: 1.408.934.2560
Fax: 1.408.719.5020
Support: WTG.support@supertalent.com
Sales: WTG.sales@supertalent.com
OEM Sales: oemsales@supertalent.com

SUPER ★ TALENT®
THE BEST MEMORY

www.supertalent.com

Super Talent Technology's Certified USB 3.0 Flash Drives for Windows To Go

- SSD Level Speed
- Enterprise Level Provisioning
- Exceptional Booting Speeds
- Accelerated Application Performance



USB 3.0 Express RC4



USB 3.0 Express RC4 & RC8 Drives for Windows To Go

Table of Contents

- Overview of Windows To Go
- USB 3.0 Express RC8
- USB 3.0 Express RC4
- RC8 vs. RC4
- Why Super Talent Fits Your Windows To Go Deployment Needs
- Encryption Services
- Installation Instructions
- Frequently Asked Questions
- Technical Support Information



Windows To Go Quick Overview

Windows To Go provides the user with a mobile corporate Windows 8 desktop. When provisioned on a USB 3.0 Express RC4 or RC8, Windows To Go becomes a tool for employees to work from any location. Simply plug the provisioned RC4 or RC8 into a compatible computer and your personalized Windows 8 profile quickly boots! Important security and management features of the operating system including Group Policy, BitLocker, BranchCache, App-V, UE-V and Direct Access are all available. Use of Windows To Go with a RC4 or RC8 is not dependent on a network connection, thus users are able to work from anywhere.

License Location: Go to www.microsoft.com/licensing/about-licensing/windows8.aspx
Or go to Microsoft home page ->About Licensing -> Product Licensing -> Windows 8

First and foremost STT highly recommends when preparing your SuperTalent Certified drive for Windows To Go that the user CAREFULLY read all of the following material below provided by Microsoft Windows To Go. Please review this material before acting on any other instructions provided in this manual. For a soft copy of these instructions please visit:
<http://www.supertalent.com/WTG/download/WTGbrochure.pdf>

> Installation recommendations/instructions:

<http://technet.microsoft.com/en-US/library/jj721578.aspx>

> Hardware Considerations for Windows To Go by Microsoft:

http://technet.microsoft.com/en-us/library/hh831833.aspx#wtg_hardware

> Tips for configuring your BIOS settings to work with Windows To Go:

<http://social.technet.microsoft.com/wiki/contents/articles/12911.tips-for-configuring-your-bios-settings-to-work-with-windows-to-go.aspx>

> Preventing a frozen or dead drive and considerations for Windows To Go:

<http://technet.microsoft.com/en-us/library/jj592681.aspx>

> Security and Data Protection Considerations for Windows To Go (Encryption):

<http://technet.microsoft.com/en-us/library/jj592679.aspx>

USB 3.0 Express RC8

With USB 3.0 becoming more prominent in the industry, external flash drives can now function at unprecedented speeds blurring the line between internal and external storage.

The Express RC8 reaches 270 MB/s read speeds, which is better than internal and external hard drives and comparable to solid state drives. The eight channel architecture and DRAM caching system excels in USB 3.0 by elevating small block performance while improving large block read and writes. Being backward compatible, the design optimizes USB 2.0 connections as well.

The Express RC8 is USB powered unlike some external drives, has read/write speeds that rival solid state drives, and is the size of a USB flash drive, which is smaller than hard drives and solid state drives. This is a significant leap forward that will change how we perceive and choose storage solutions.



Specifications

Capacity**	50GB, 100GB
Interface	USB 3.0 and USB 2.0
OS Support*	Windows XP, Windows Vista, Windows 7, Windows 8, Windows To Go*, and OS X
NAND Flash	MLC
Dimensions	92.7 mm x 25.0 mm x 8.0 mm
Seq. Read***	270 MB/s
Seq. Write***	220 MB/s
Error Correction	Built in ECC/EDC functionality
Wear Leveling Algorithm	Global wear-leveling
Humidity	5% to ~98% RH
Operating Shock	1500G
Operating Vibration	16G
Operating Temp.	0°C to 70°C

***USB 3.0 Port and the installation of an enhanced driver required for maximum speeds.

** Actual usable capacity may vary. 1GB equal 1 billion bytes.

*Windows To Go must be used with PCs that meet the Windows 7 or Windows 8 certification requirements.

Ordering information

Capacity	Part Number
50GB	ST3U50GR8S
100GB	ST3U100GR8S

USB 3.0 Express RC4

The USB 3.0 Express RC4 is the ultimate combination of speedy performance, price, and usability. The RC4's boot time is incredibly quick, utilizing four channels of flash the USB 3.0 RC4 acts as a high performance external SSD drive, to deliver the best performance experience for the user to date.

As a certified Windows 8 hardware product, Super Talent's RC4 is one of the world's top USB 3.0 drives with SSD technology; it provides high random read/write speed capabilities and reports itself as fixed media. Super Talent's RC4 meets and surpasses many of the performance requirements of Windows To Go certified drives.

Housed in a stylish white and black case, this design allows for the cap to snap onto the back so it will not be lost or you can put it on a lanyard. For tech professionals who need a high performance drive that can boot and run applications extremely well, the RC4 is a valued choice.



Specifications

Capacity**	32GB, 64GB, 128GB, 256GB
Interface	USB 3.0 and USB 2.0
OS Support*	Windows XP, Windows Vista, Windows 7, Windows 8, Windows To Go*, and OS X
NAND Flash	MLC
Dimensions	87.3 (L) X 26 (W) X 9 (H) mm
Seq. Read***	320 MB/s
Seq. Write***	120 MB/s
Error Correction	Built in ECC
Humidity	5% to ~98% RH
Operating Shock	1500G
Operating Vibration	16G
Operating Temp.	0°C to 70°C

***USB 3.0 Port and the installation of an enhanced driver required for maximum speeds.

** Actual usable capacity may vary. 1GB equal 1 billion bytes.

*Windows To Go must be used with PCs that meet the Windows 7 or Windows 8 certification requirements.

Ordering information

Capacity	Part Number
32GB	ST3U32GR4S
64GB	ST3U64GR4S
128GB	ST3U128GR4S
256GB	ST3U256GR4S

Why Choose Super Talent for Windows To Go Deployment?

Super Talent Technology Corporation headquartered in San Jose, California, designs and manufactures Flash based storage solutions for Enterprise Servers, Workstations, Personal Computers and Consumer Electronics. An ISO 9001 certified company, Super Talent utilizes its state-of-the art factory and leading-edge components to produce award winning products with exceptional performance and outstanding reliability. Super Talent is an active member of JEDEC, ONFI and USB-IF standards bodies, and holds over 200 patents in Flash and DRAM technology.

Super Talent products are backed with excellent global service and support. Our leadership in product innovation, R & D, and exceptional customer service is why leading OEMs, System Integrators and VARS continue to choose Super Talent as their preferred memory solutions partner.

For more information on Super Talent and Windows To Go visit: <http://www.supertalent.com/WTG/>

Why Super Talent is Hands Down the Best Drive for the Windows To Go Experience...

Unsurpassed Boot Performance

- With 4 or 8 channels of flash for thousands of small files to communicate with your PC, it takes a matter of seconds for you to be up and running.

USB 2.0 Performance – Incredible Legacy Performance

- Even if you do not have USB 3.0 ports, the RC8 & RC4 will still be one of the fastest drives you ever set your eyes on with the limited bandwidth restrictions and full backward compatibility with USB 2.0.

Reliability



- Integrated SSD technology enables the RC8 & RC4 to deliver amazing real world performance. Product reliability and longevity is increased due to high level provisioning.

Express RC8

- Easily outperforms the best HDD and can rival many internal SSD speeds.
- Built like an internal SATA SSD, full 8 channels of flash with write acceleration provisioning.

Express RC4

- 4 channel architecture, DRAM caching system.
- Fast 4k block reads for shorter boot times and faster application loading.

USB 3.0 EXPRESS RC8 VS. USB 3.0 EXPRESS RC4 PRODUCT COMPARISON CHART	Express RC-4	Express RC-8
		
~Average Booting Speeds** (Time to Boot)	~Up to 6 seconds	~Up to 7 seconds
	32GB	
	64GB	50GB
	128GB	100GB
	256GB*	
Channels of NAND Flash	4 Channels	8 Channels
Read Speed**	320 MB/sec Read	270 MB/sec Read
Write Speed**	120 MB/sec Write	220 MB/sec Write
Can Attach Lanyard or Keychain	✓	✓
Technical Support	✓	✓
Warranty	✓	✓

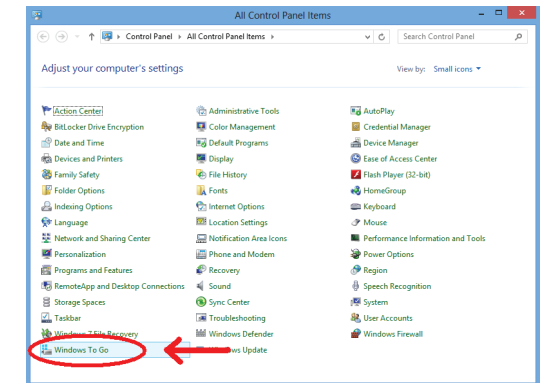
*Build to Order upon request

**Actual performance varies depending upon the system configuration and the application used. Performance is highly dependent upon test environment and use case.

How To Create Windows To Go Image on a USB Drive:

1. Obtain a copy of a Windows OS installation image file (.WIM file) or a copy of a Windows OS installation image file in DVD-ready format(.ISO file) to copy onto a host computer

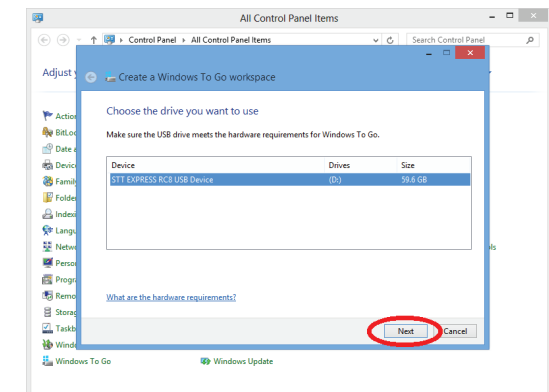
2. In the **Control Panel**, choose **Windows To Go**.



3. Insert a USB drive into a USB port on the host computer.

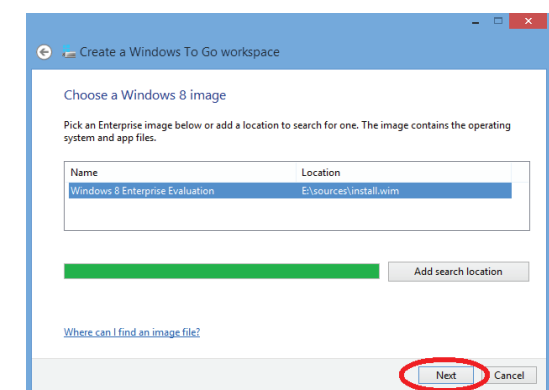
a. **USB drive will be reformatted and all data will be lost when you provision it**

4. Select the USB drive you want to install Windows To Go on and click **Next**.



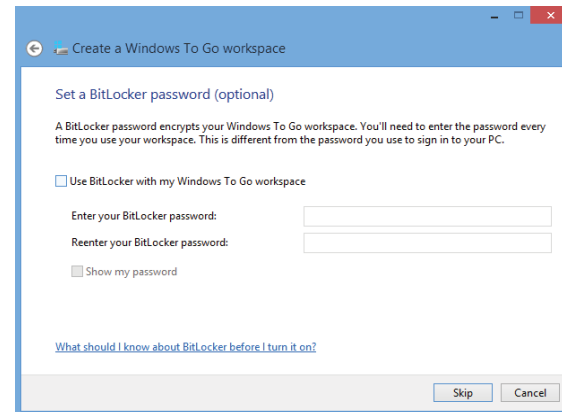
5. Select the Windows 8 .ISO or .WIM file and click **Next**.

a. **If you do not see the .ISO or .WIM file, search the location of the file you copied onto the host computer.**

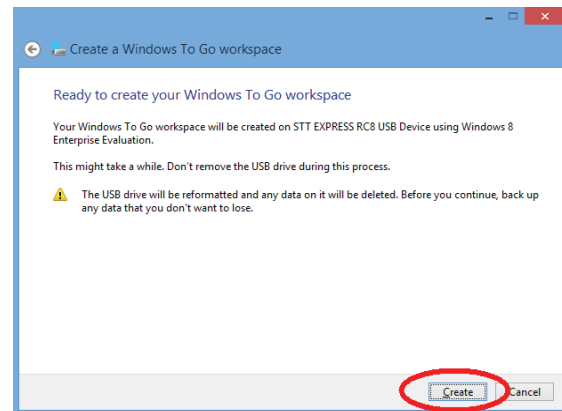


How to Create Windows To Go Image on a USB Drive:

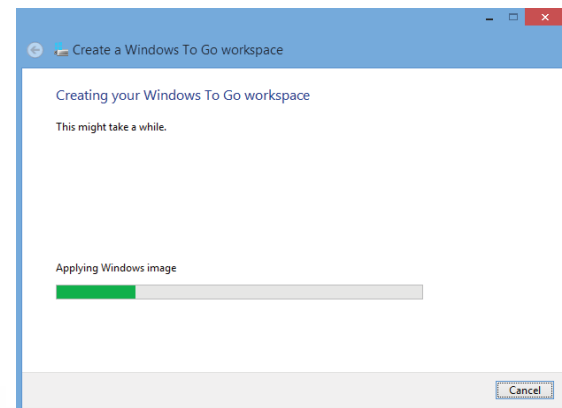
6. (Optional) **BitLocker** password configuration pops up. By using BitLocker, the USB drive will be encrypted. You will need to enter the password each time to access the drive. If you choose not to use BitLocker, click **Skip**.



7. Click **Create** to begin provisioning Windows To Go on the USB drive.
a. This creation time can vary depending on the hardware from which you are running this.



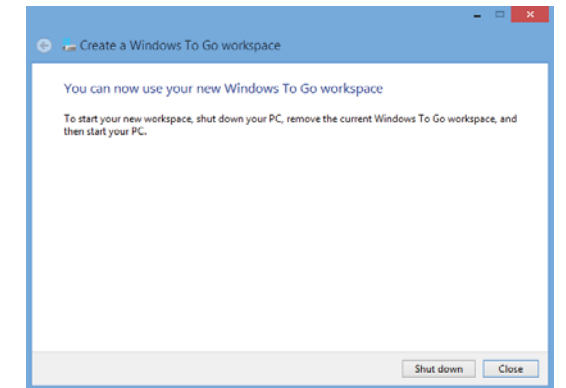
8. Once the drive is prepared, a new window asking you to choose a boot option will pop up



How to Create Windows To Go Image on a USB Drive:

9. Select **Shut Down** to turn off the PC.

****If the USB drive is removed from the PC while working in Windows To Go, your session will freeze. If the USB is not reconnected within 60 seconds, the session will crash with a blue screen dump.****



Preventing a Frozen/Dead Drive:

- ✓ Always shut down Windows and wait for shutdown to complete before removing the Windows To Go drive.
- ✓ Do not insert the Windows To Go drive into a running computer.
- ✓ Do not boot the Windows To Go drive from a USB hub. Always insert the Windows To Go drive directly into a port on the computer.
- ✓ If available, use a USB 3.0 port with Windows To Go.
- ✓ Do not install non-Microsoft core USB drivers on Windows To Go.
- ✓ Suspend BitLocker on Windows 7 host computers before changing the BIOS settings to boot from USB and then resume BitLocker protection.

Setting Up BIOS:

1. Turn on PC, or restart if it is already on.
2. As your computer is booting up, watch for a message which tells you how to enter BIOS.
 - a. Common BIOS messages:
 - Press [key] to enter setup
 - Setup: [key]
 - Enter BIOS by pressing [key]
 - Press [key] to enter BIOS setup
 - Press [key] to access BIOS
 - Press [key] to access system configuration
3. Press the key or keys to get into BIOS.
4. In BIOS, navigate your way to boot order which can be under "**Boot**" or "**System Configuration**" or "**Storage**".
5. Look for **Boot Priority**.
6. Select **USB** as the item to boot from first.
7. **Save and Restart**.
8. You should now boot into WTG off the USB drive.

**If you have configured a dual boot computer with a Windows operating system and another operating system, it might work occasionally and fail occasionally. Using this configuration is unsupported and not recommended.*