



## **Driver Installation Instructions**

**CoreStore™ MV/MP**

Make Sure Power Is OFF.  
Choose an Empty PCIe Slot x1, x8, x16



Plug Drive into Socket

CoreStore MP → Desktop PC, Server PC

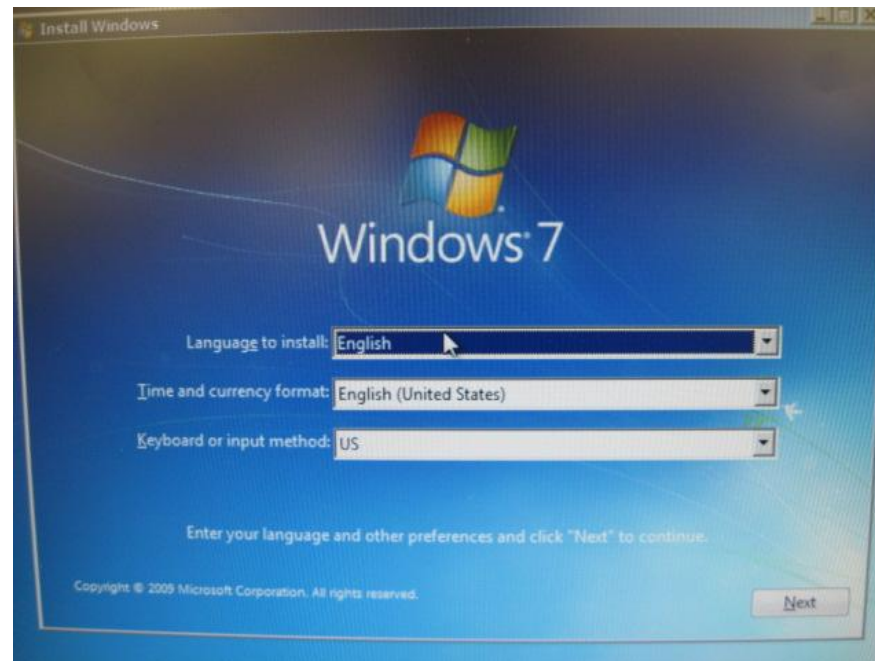
CoreStore MV → notebook (socket is different)



# Install (*Using CoreStore as Boot Drive*)

After Insertion. Power up system.

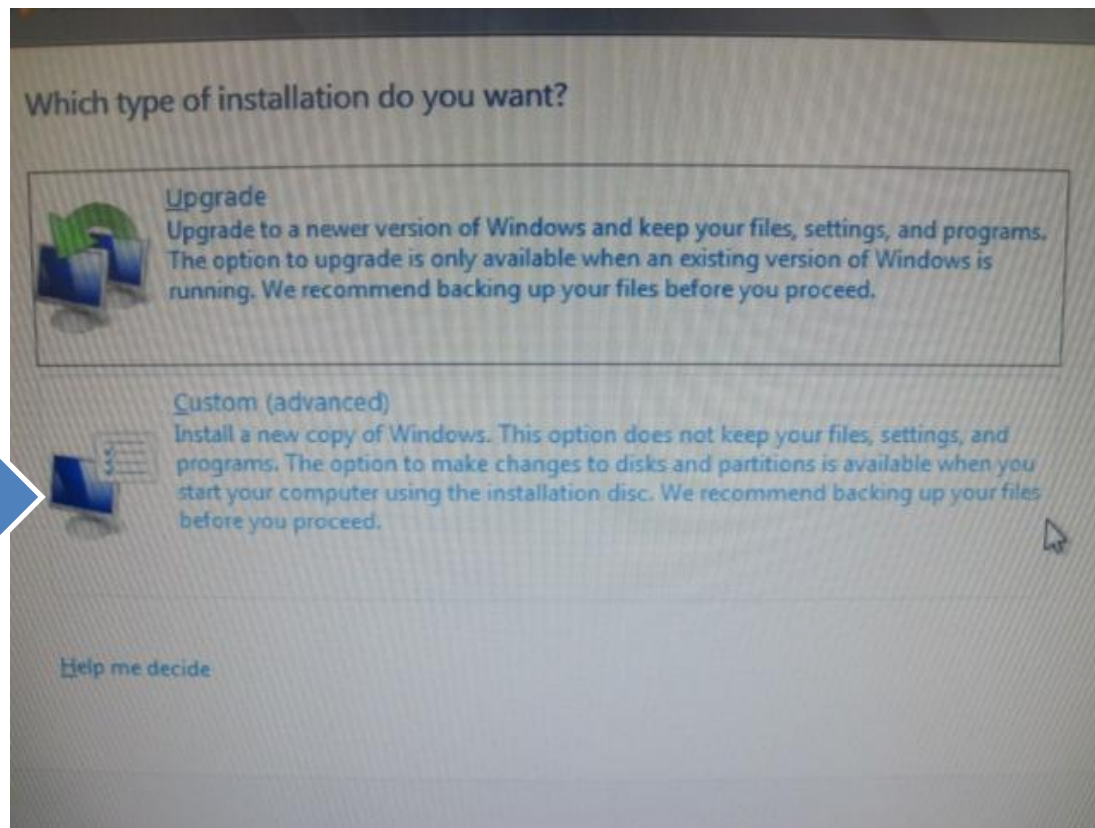
Boot with CD ROM Boot Media



# Choose Custom Installation

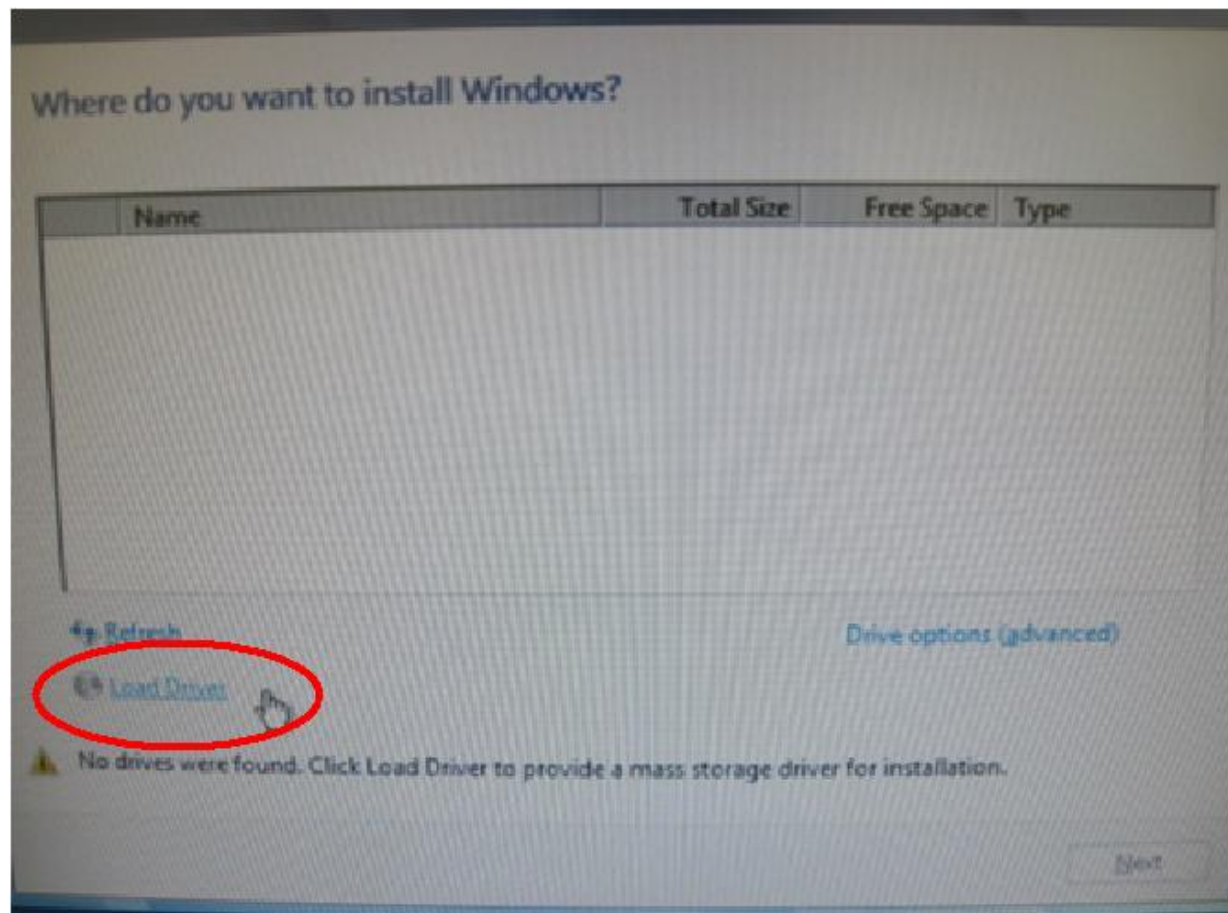
Custom

Install

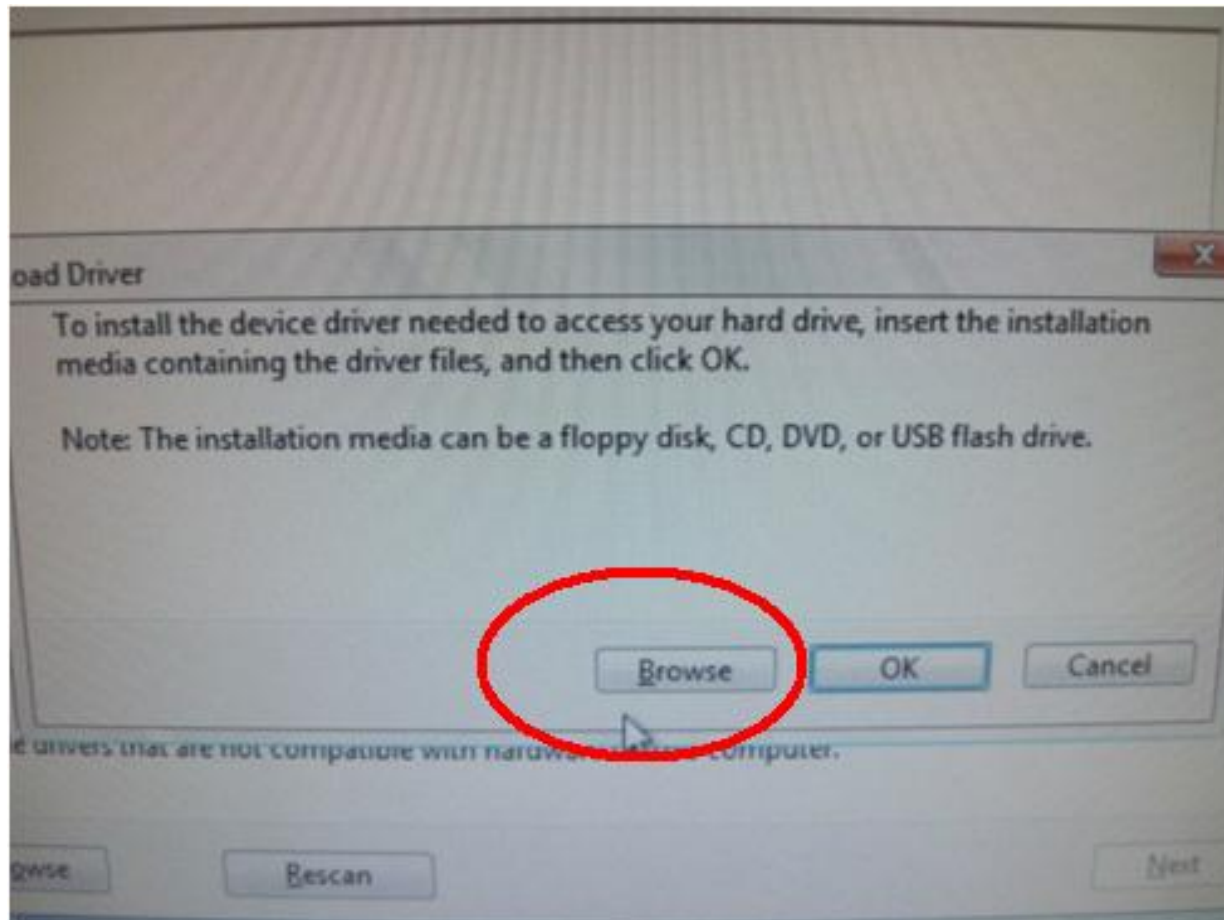




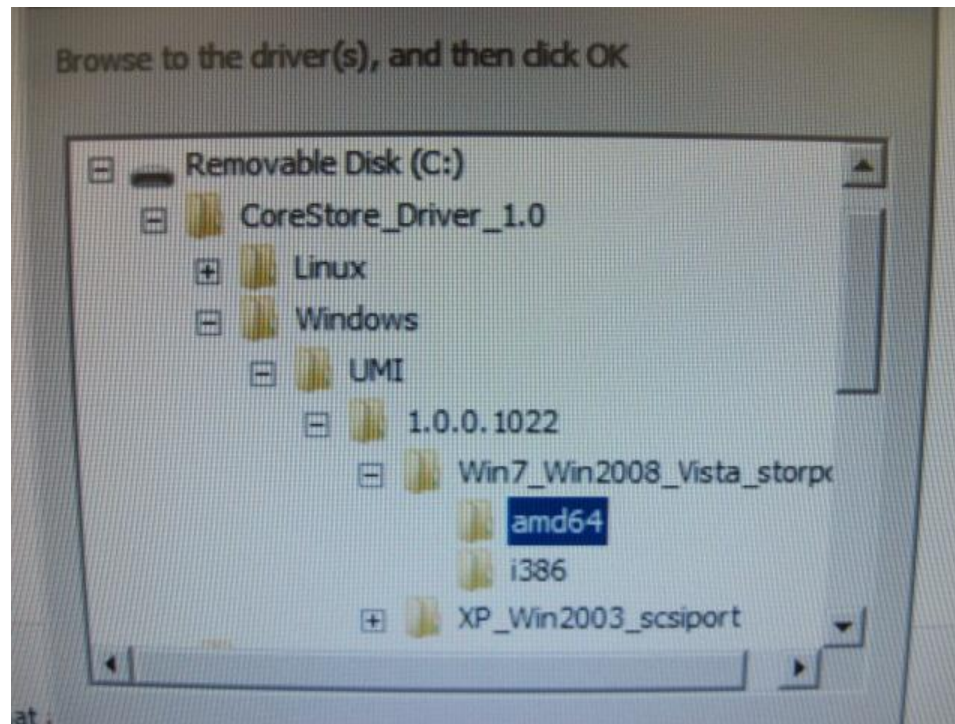
# Choose Load Driver



# Choose Browse

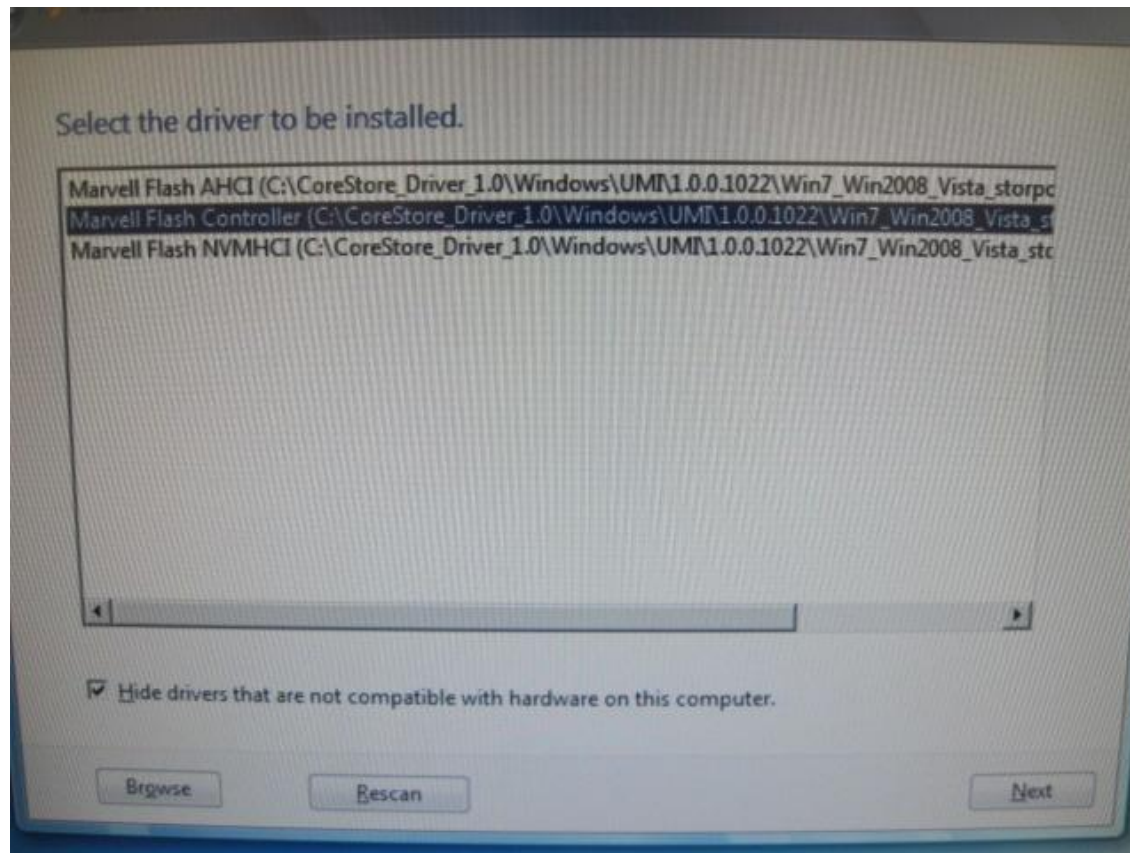


# Choose Folder based on OS AMD64 and i386 (Intel)

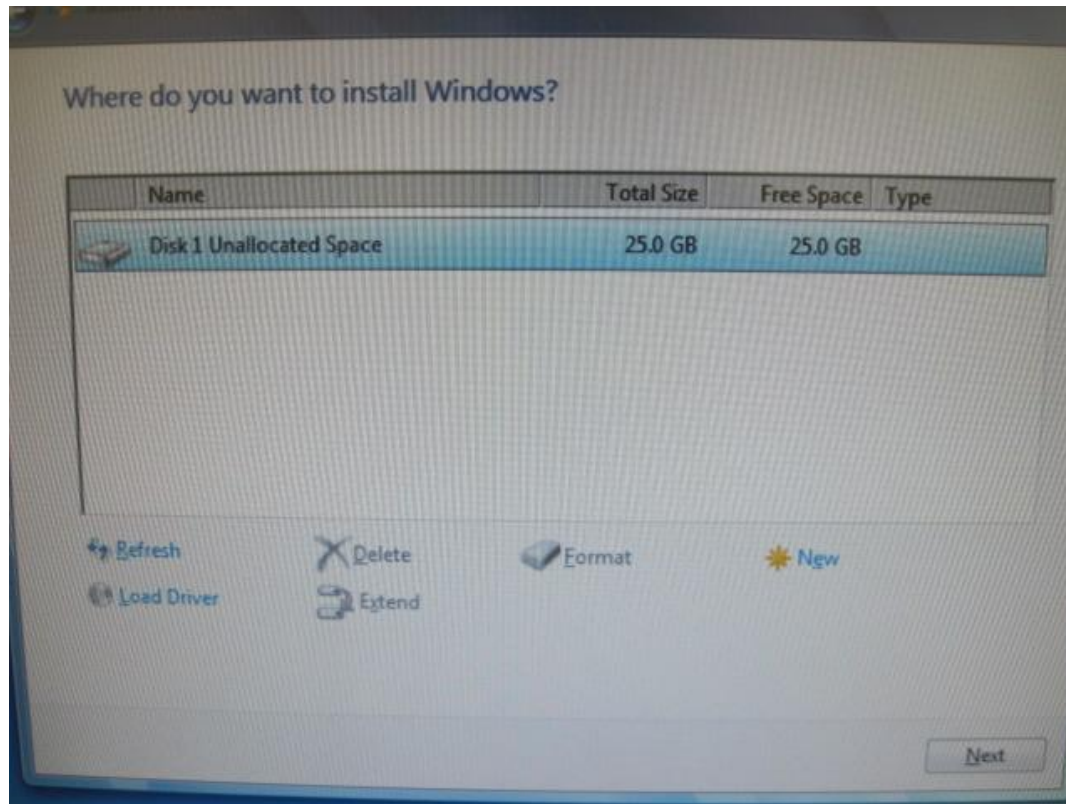




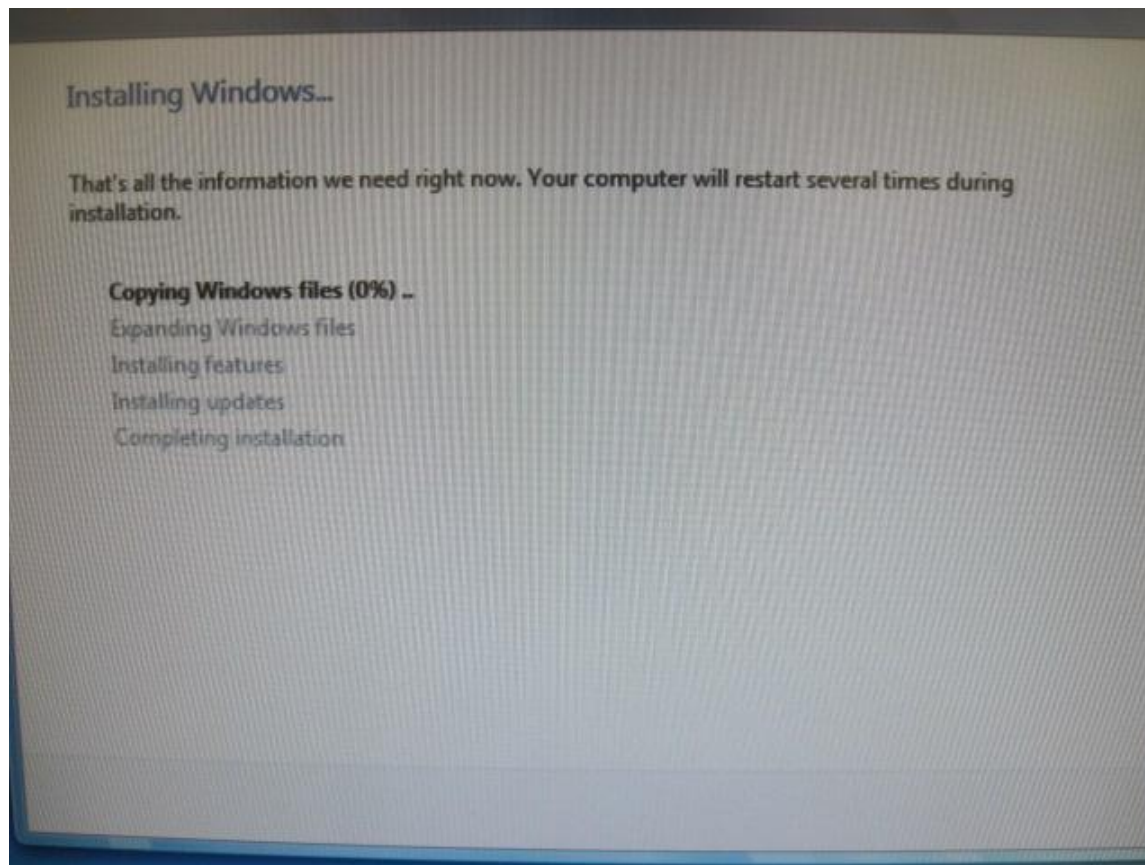
# Choose Marvell Flash Controller



Should be able to see Drive now  
*Press Next to Continue*



# Install Start → regular installation



Done...

After install, if you still have driver issues please follow the steps listed in the following Section “Install Drive as a Data Drive”

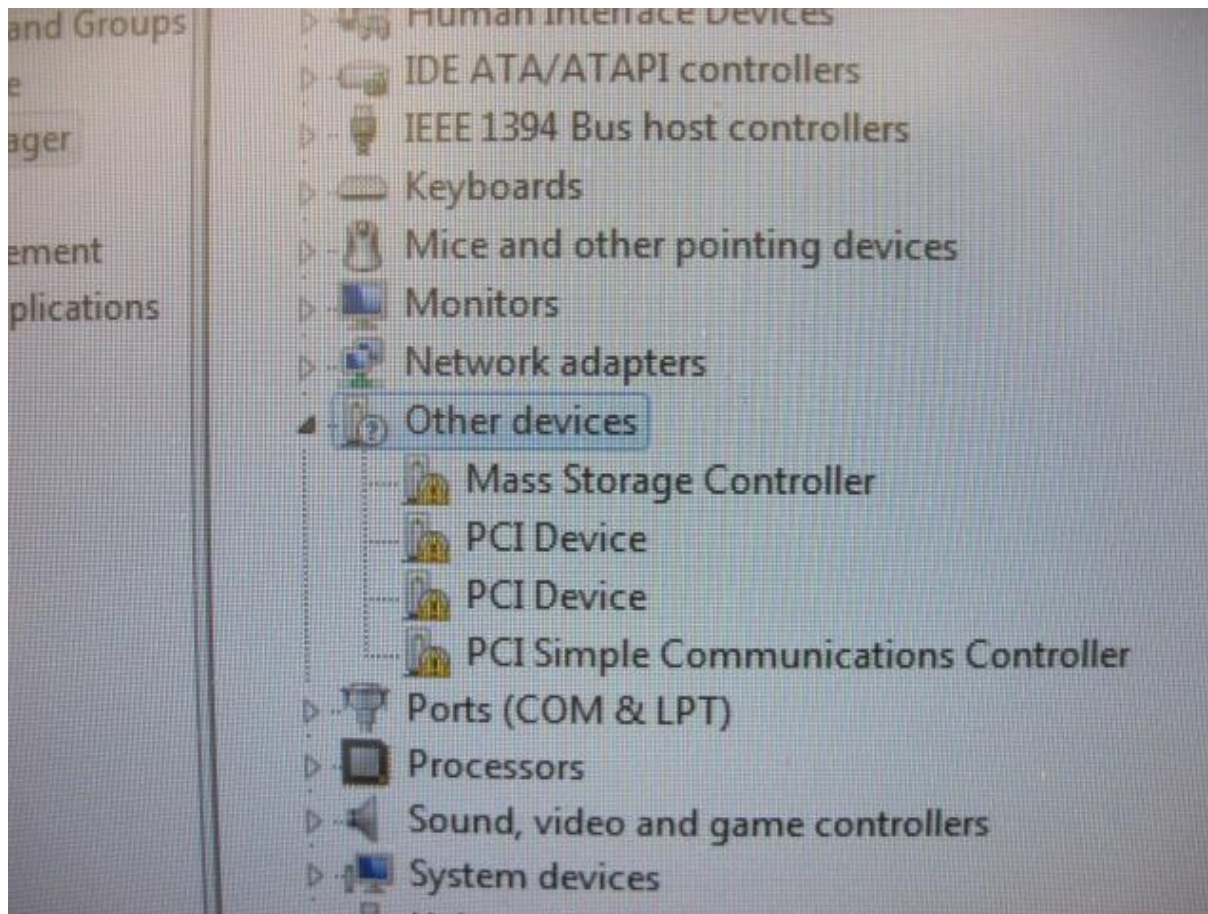
# Install *Drive as a Data Drive*

With Power OFF, plug in SSD into open PCIe Slot.

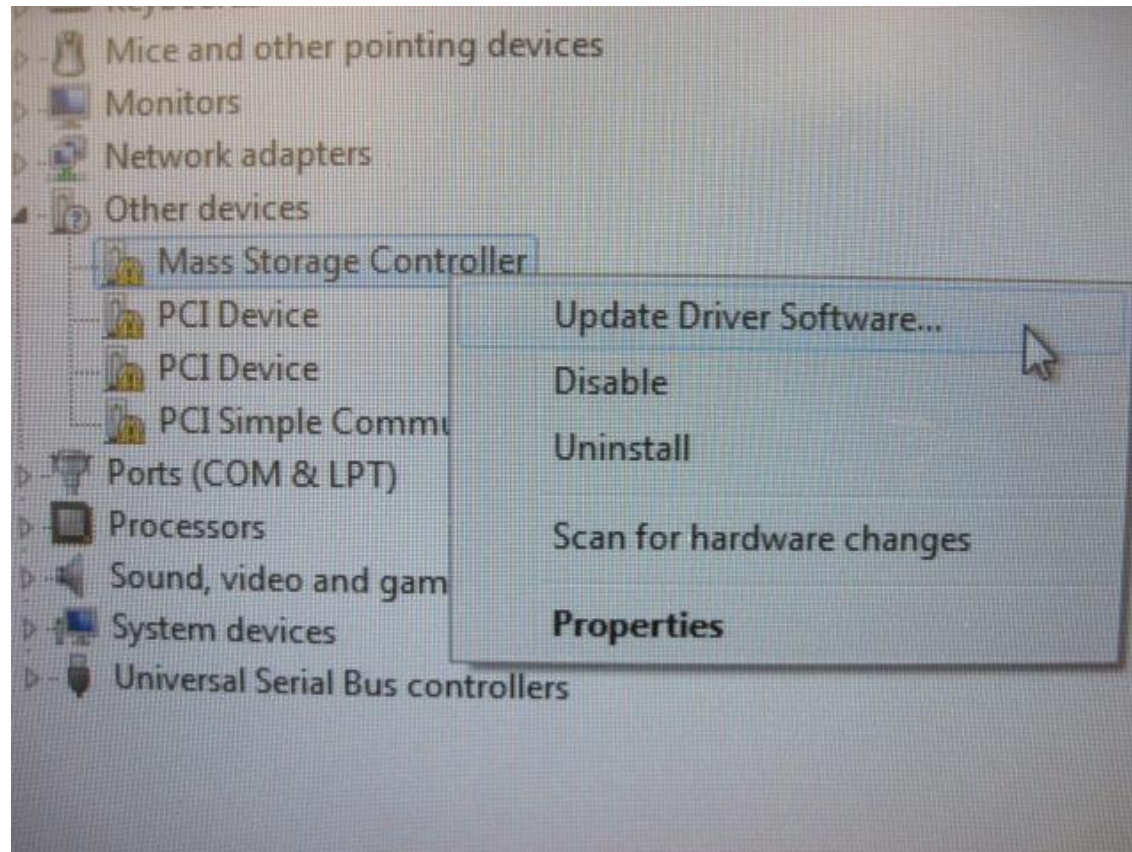
Boot using regular boot device (HDD or other SSD)



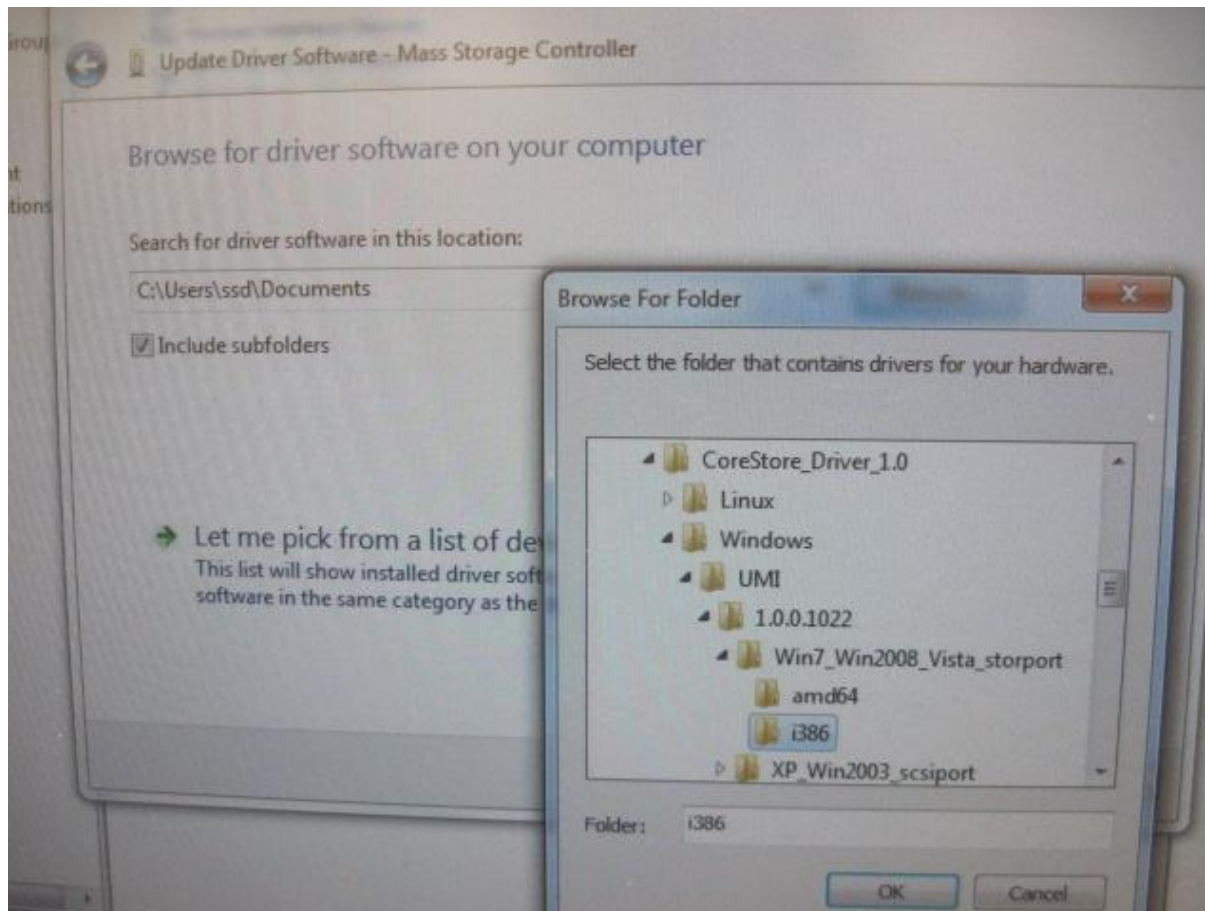
After Booting, go to the Device Manager and look for devices missing drivers.



Right-Click devices and choose “Update Driver Software”



Choose drivers files based on OS and Processor type.  
Repeat process until all 3 devices have a Marvell driver.





Done. Here you can see all 3 Marvell Devices  
with Marvell drivers

